

LEASE OPPORTUNITY

8151 East Indian Bend Road • Scottsdale, Arizona



Building Features:

- Incredible views of Silverado Golf Course
- 1,719 RSF available
- 4 per 1000 parking
- Covered parking available
- Ability to add additional offices
- Close proximity to the Loop 101
- Extensive glass line
- Unlimited common area use including conference room, interior restrooms, and reception area

Mike Cavanagh
480.212.0754/480.235.1109
mec@corerealtypartners.com

Ryan Mollen
480.212.0756/480.296.6554
rmollen@corerealtypartners.com

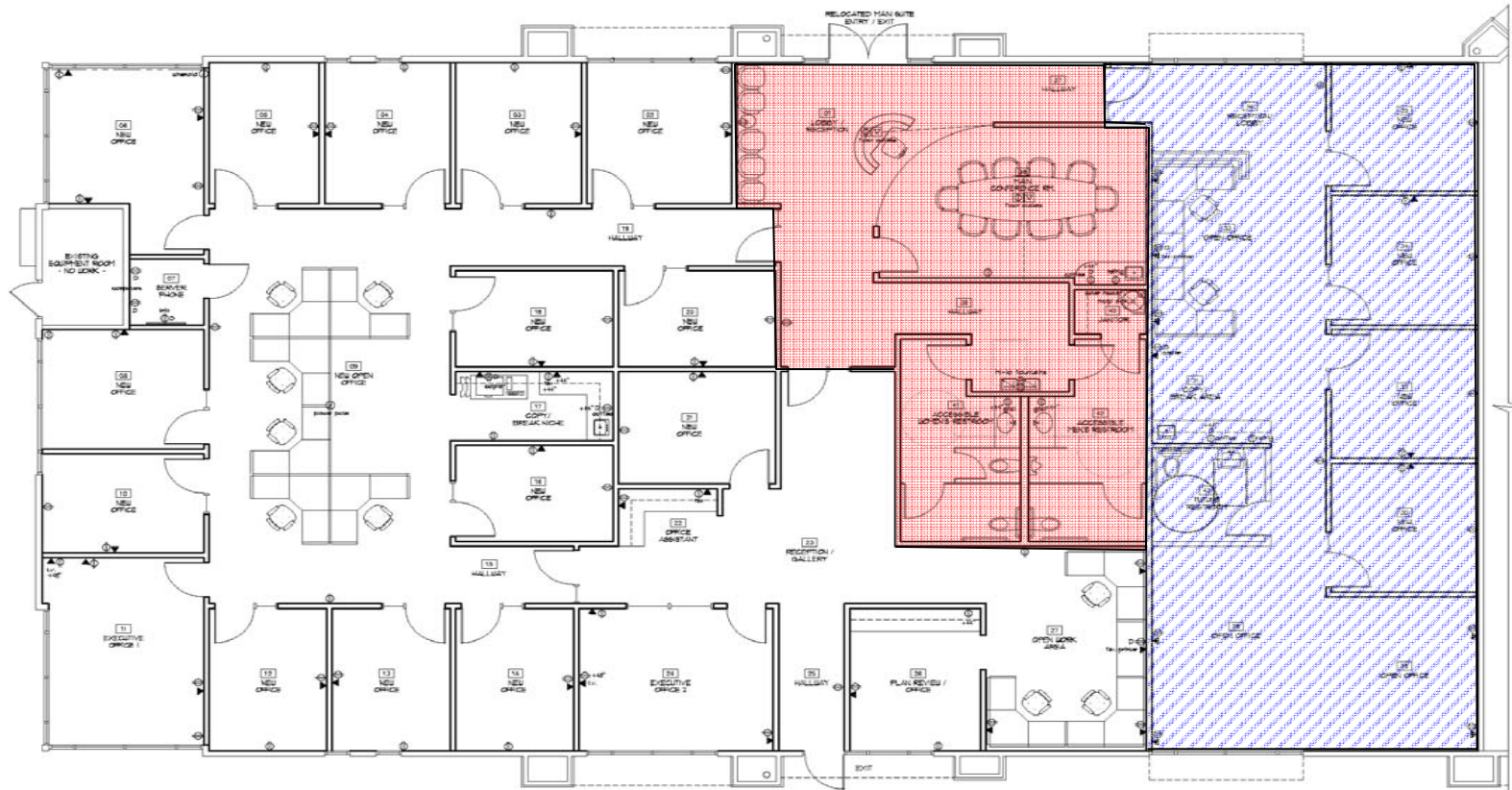
The information contained herein has been given to us by the owner of the property or obtained from sources that we deem reliable. No warranties or representations, expressed or implied, are made as to the accuracy of the information contained herein, and same is submitted subject to errors, omissions, change of price, rental or other conditions, withdrawal without notice and to any special listing conditions imposed by our principals. This statement with the information it contains is given with the understanding that all negotiations relating to the purchase, renting or leasing of the property described above shall be conducted through this office.



INDIAN BEND CORPORATE CENTRE

8151 East Indian Bend Road • Scottsdale, Arizona

Building 9: +/- 1,719 RSF



 = Available Space

 = Common Areas

The information contained herein has been given to us by the owner of the property or obtained from sources that we deem reliable. No warranties or representations, expressed or implied, are made as to the accuracy of the information contained herein, and same is submitted subject to errors, omissions, change of price or space layout, rental or other conditions, withdrawal without notice and to any special listing conditions imposed by our principals. This statement with the information it contains is given with the understanding that all negotiations relating to the purchase, renting or leasing of the property described above shall be conducted through this office.