

# LEASE OPPORTUNITY

352 East Camelback Road • Phoenix, Arizona



## Building Features:

- Immediate access to SR-51 & I-17 freeways
- ± 804 – 11,007 RSF available (divisible)
- 6 per 1,000 parking
- Premier Camelback Road location
- Close proximity to numerous retail amenities
- Prominent signage available
- Flexible floor plans
- Roll-up door available

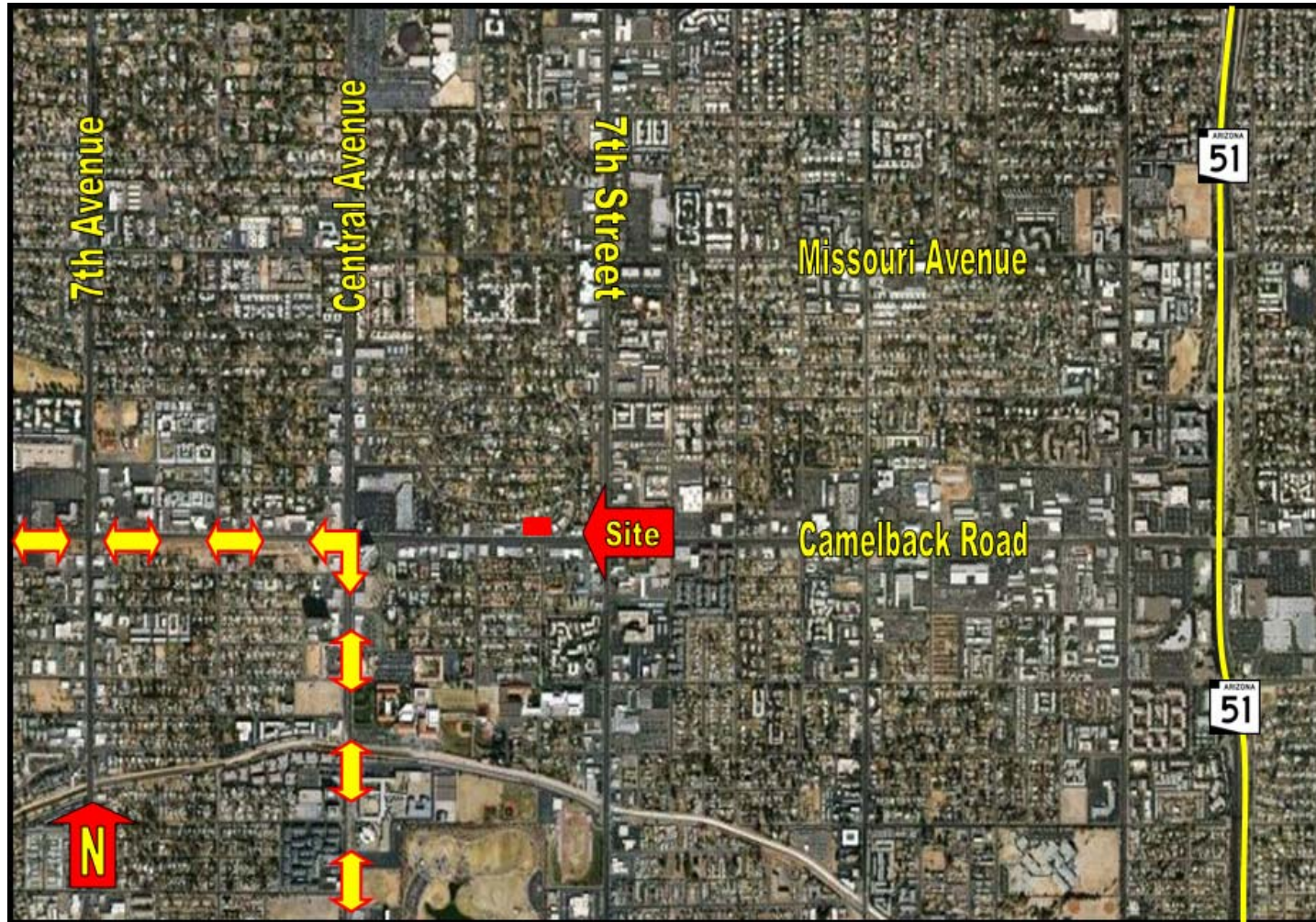
Jared Blumberg  
480.212.0766/480.209.5459  
[jblumberg@corerealtypartners.com](mailto:jblumberg@corerealtypartners.com)

The information contained herein has been given to us by the owner of the property or obtained from sources that we deem reliable. No warranties or representations, expressed or implied, are made as to the accuracy of the information contained herein, and same is submitted subject to errors, omissions, change of price, rental or other conditions, withdrawal without notice and to any special listing conditions imposed by our principals. This statement with the information it contains is given with the understanding that all negotiations relating to the purchase, renting or leasing of the property described above shall be conducted through this office.

**CORE**  
Realty Partners, L.L.C.

# LEASE OPPORTUNITY

352 East Camelback Road • Phoenix, Arizona



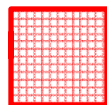
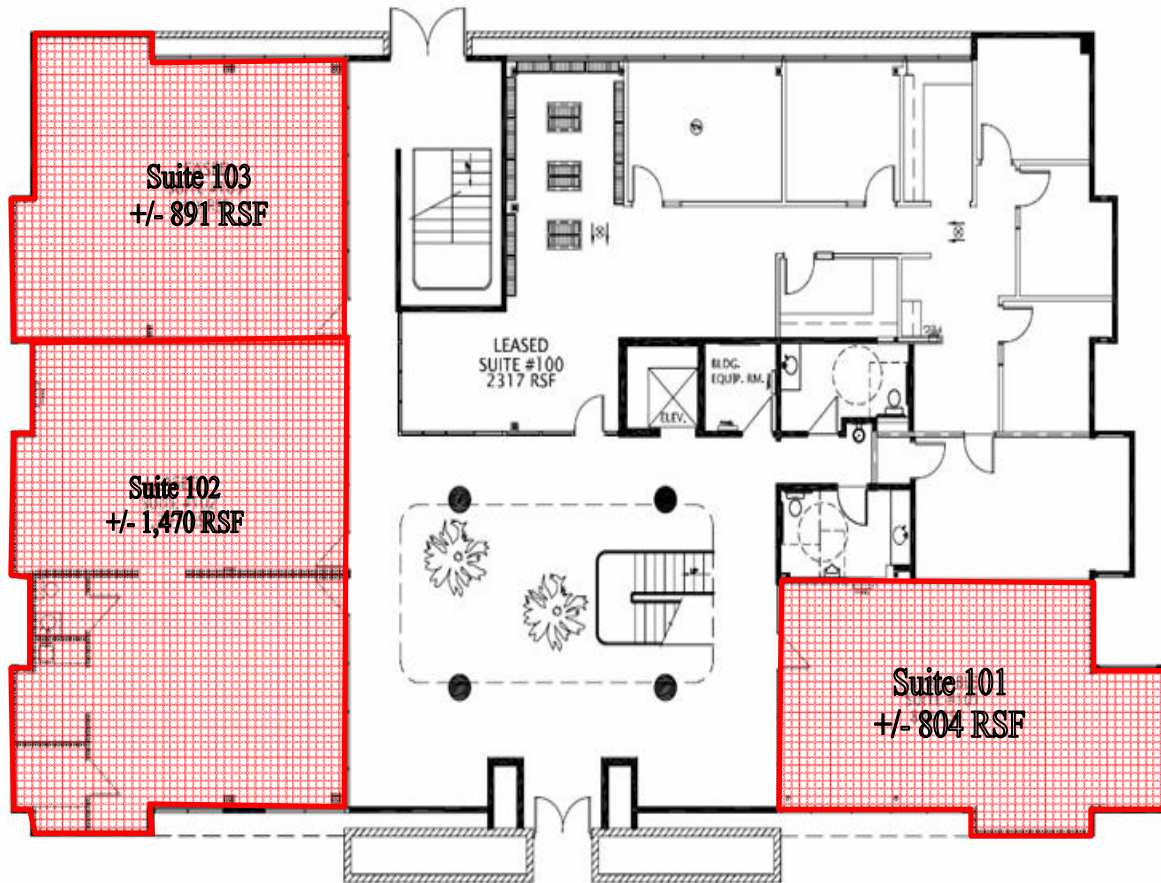
 = Future Light Rail

**CORE**  
Realty Partners, L.L.C.

The information contained herein has been given to us by the owner of the property or obtained from sources that we deem reliable. No warranties or representations, expressed or implied, are made as to the accuracy of the information contained herein, and same is submitted subject to errors, omissions, change of price or space layout, rental or other conditions, withdrawal without notice and to any special listing conditions imposed by our principals. This statement with the information it contains is given with the understanding that all negotiations relating to the purchase, renting or leasing of the property described above shall be conducted through this office.

# 1<sup>ST</sup> FLOOR

Available: +/- 3,165 RSF (divisible)



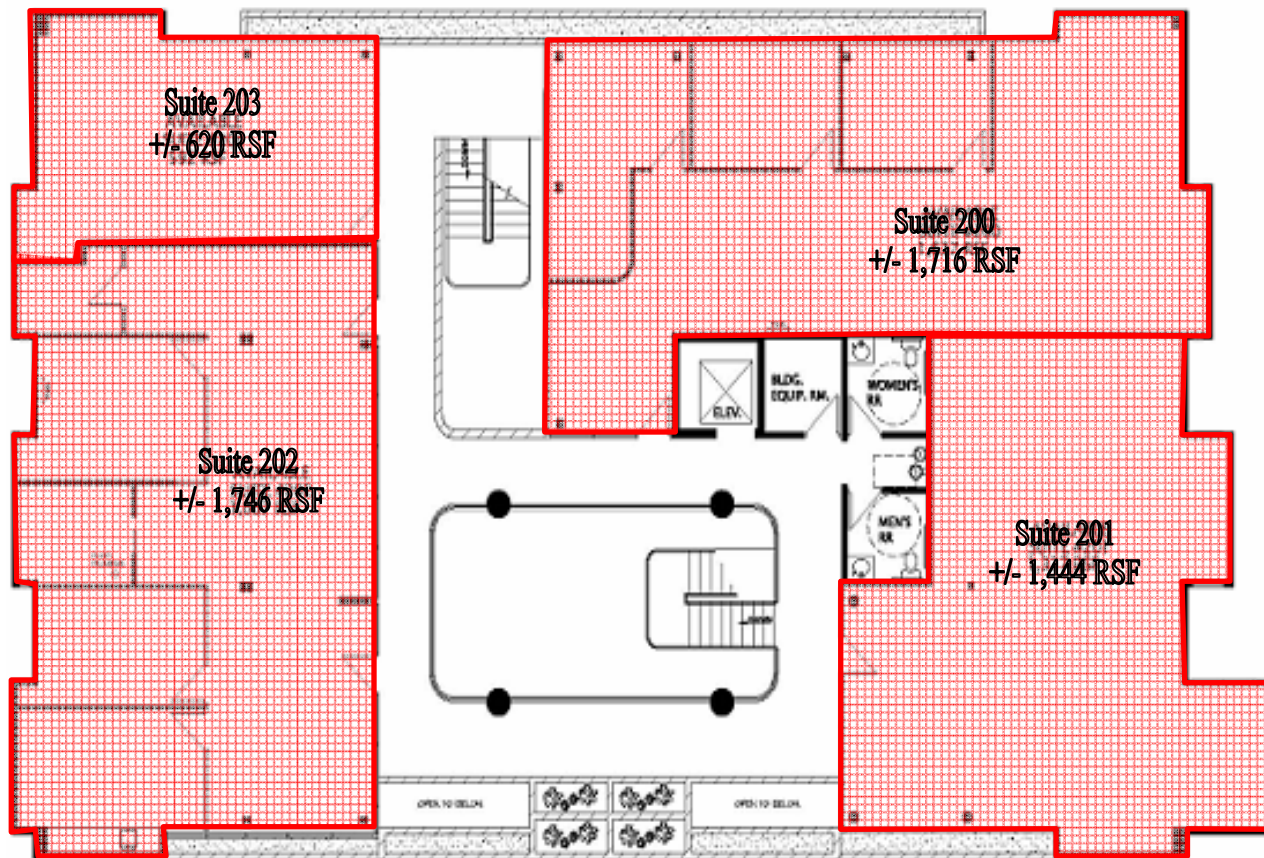
= Available

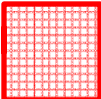
**CORE**  
Realty Partners, L.L.C.

The information contained herein has been given to us by the owner of the property or obtained from sources that we deem reliable. No warranties or representations, expressed or implied, are made as to the accuracy of the information contained herein, and same is submitted subject to errors, omissions, change of price or space layout, rental or other conditions, withdrawal without notice and to any special listing conditions imposed by our principals. This statement with the information it contains is given with the understanding that all negotiations relating to the purchase, renting or leasing of the property described above shall be conducted through this office.

# 2<sup>ND</sup> FLOOR

Entire Floor Available: +/- 5,526 RSF (divisible)



 = Available

**CORE**  
Realty Partners, L.L.C.

The information contained herein has been given to us by the owner of the property or obtained from sources that we deem reliable. No warranties or representations, expressed or implied, are made as to the accuracy of the information contained herein, and same is submitted subject to errors, omissions, change of price or space layout, rental or other conditions, withdrawal without notice and to any special listing conditions imposed by our principals. This statement with the information it contains is given with the understanding that all negotiations relating to the purchase, renting or leasing of the property described above shall be conducted through this office.